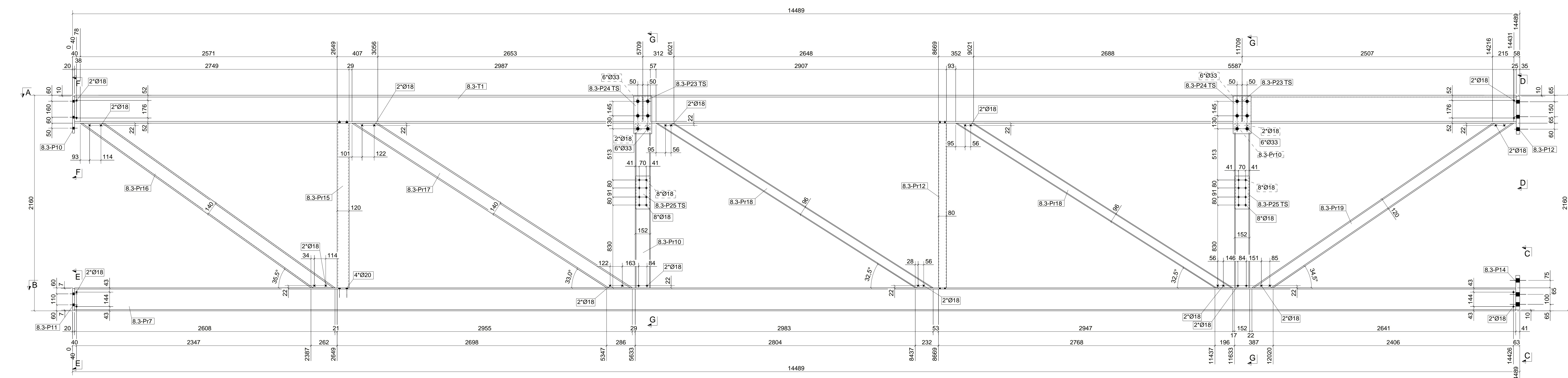
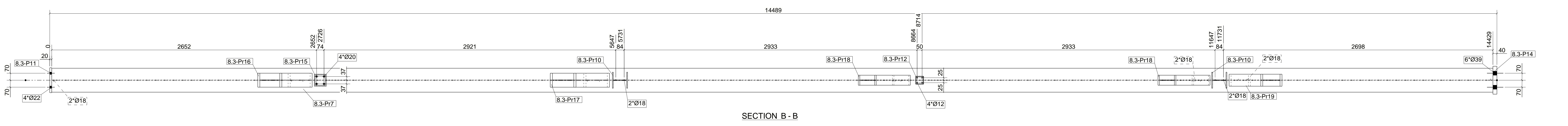


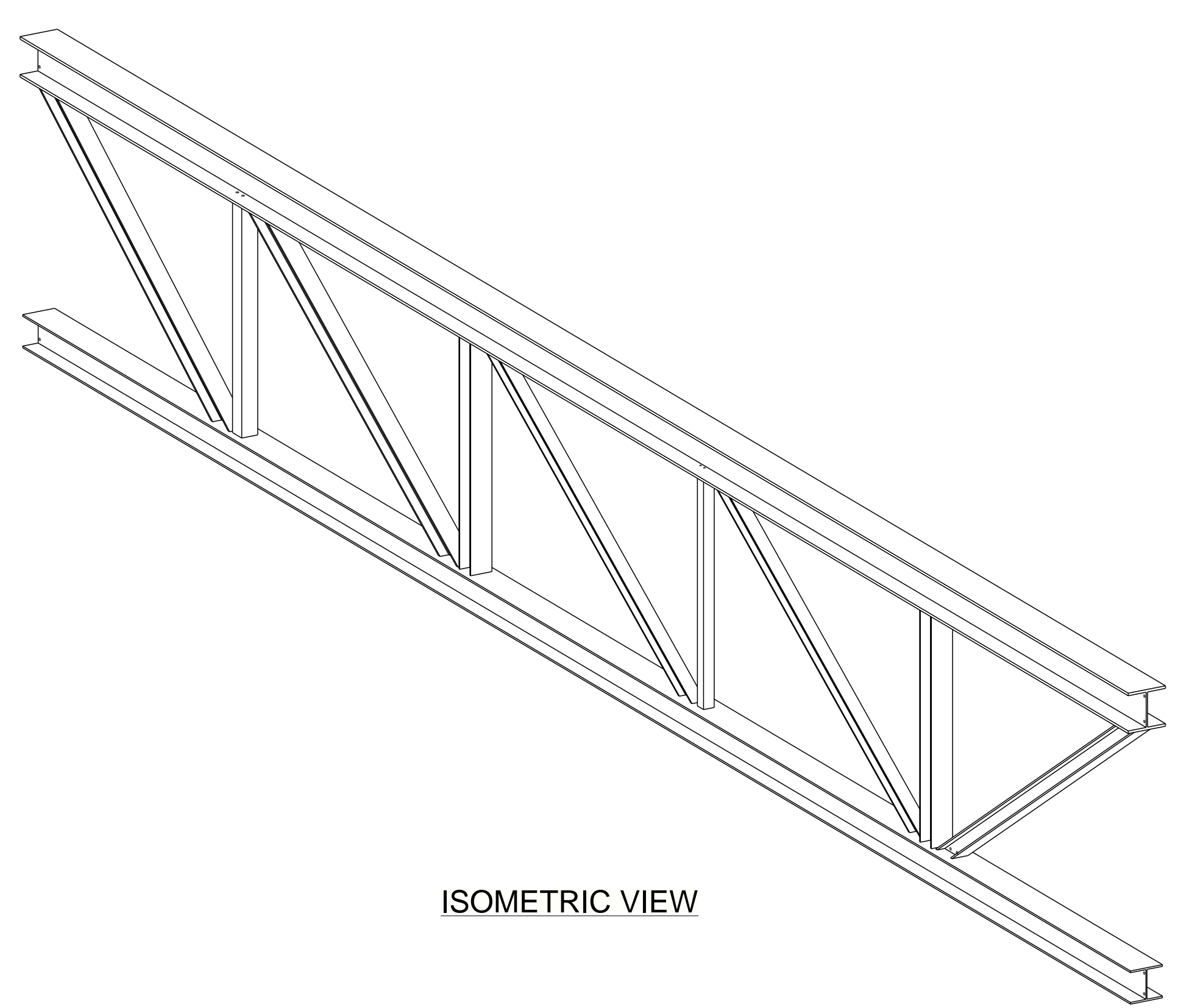
SECTION A - A



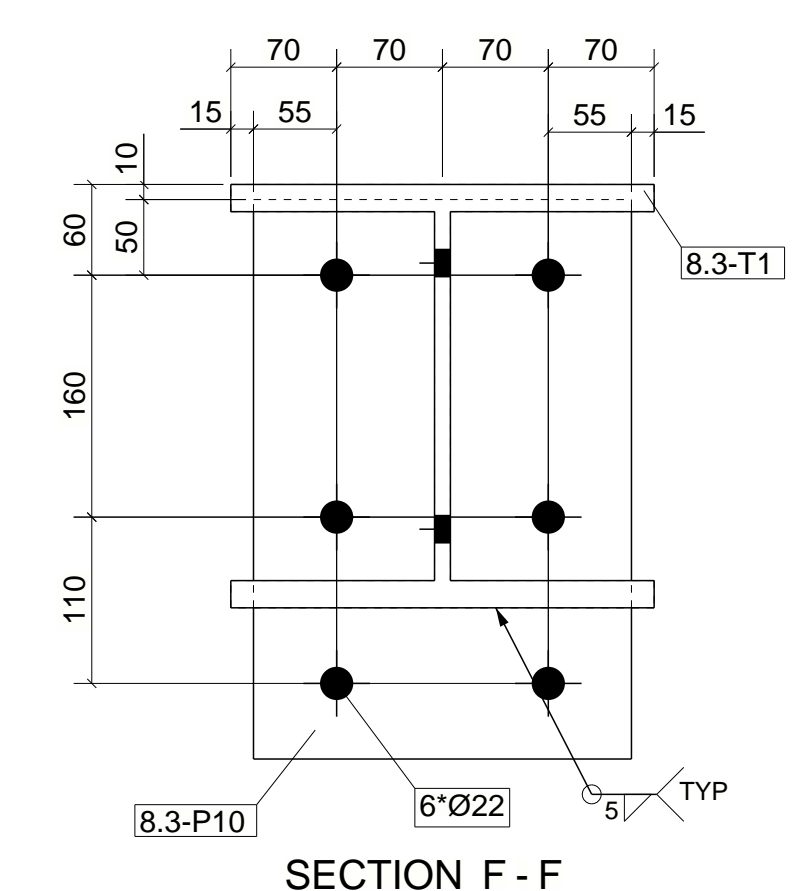
A - B



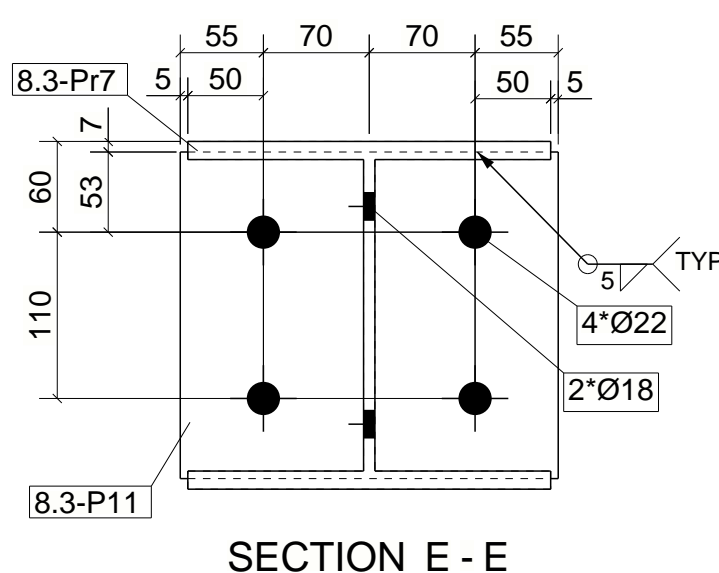
SECTION B - B



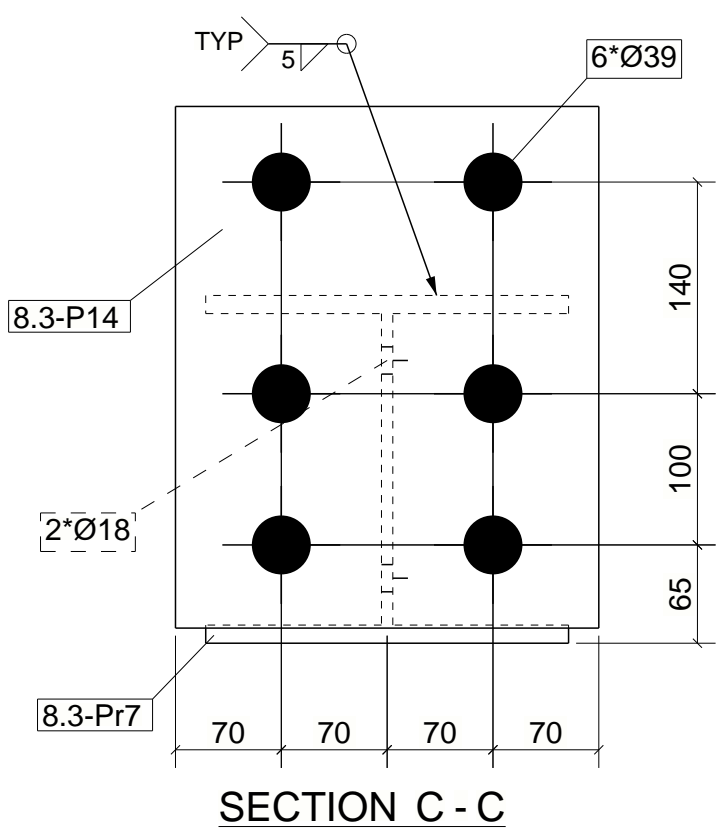
ISOMETRIC VIEW



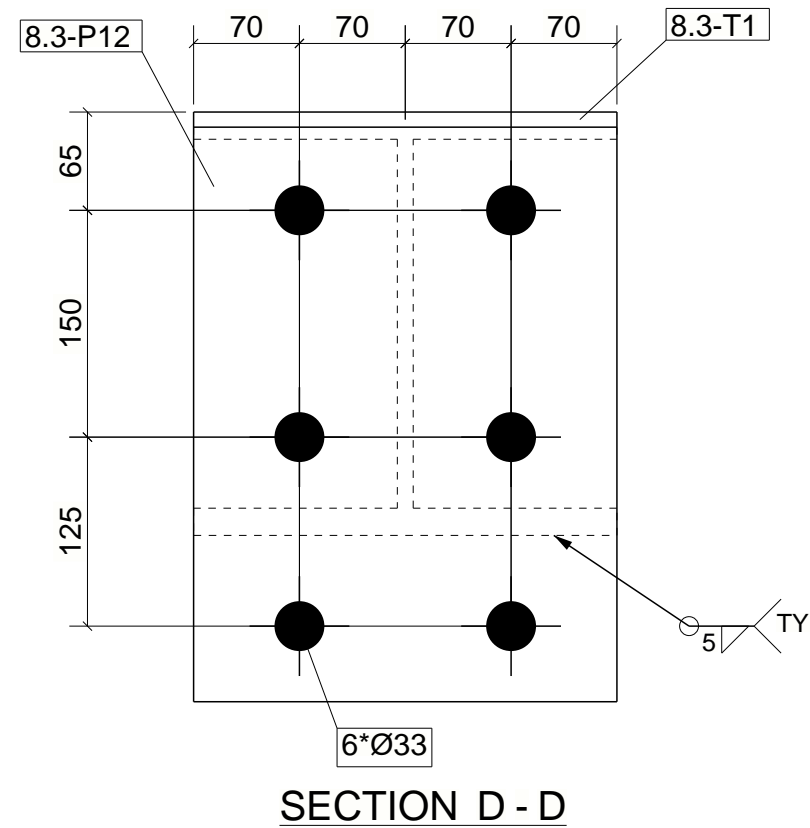
SECTION F - F



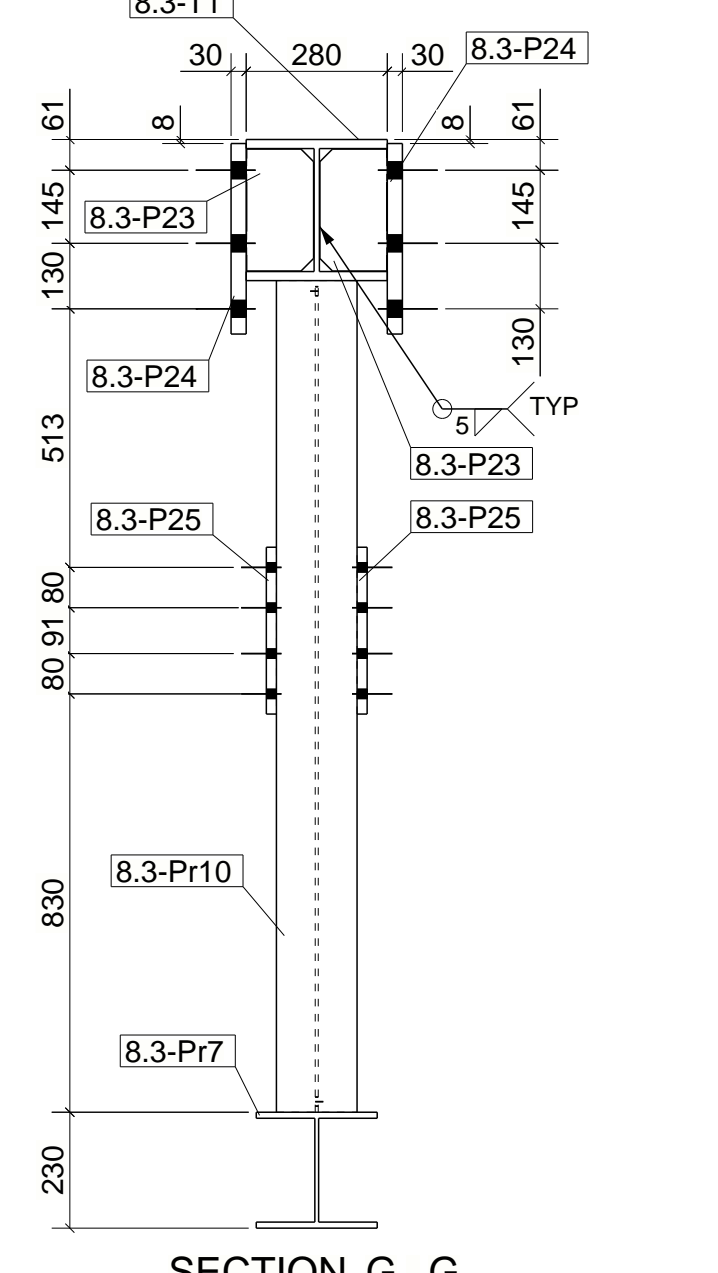
SECTION E - E



SECTION C - C



SECTION D - D



SECTION G - G

Part	Profile	Material	Number	Length (mm)	Weight (kg)
8.3-P10	STRIP20x250	S235	1	370	14.5
8.3-P11	STRIP20x250	S235	1	216	8.5
8.3-P12	PL30x200	S235	1	380	29.2
8.3-P14	PL40x200	S235	1	340	30.3
8.3-P23	PL10x133	S235	4	242	9.9
8.3-P24	STRIP20x180	S235	4	378	64.1
8.3-P25	STRIP20x140	S235	4	331	29.1
8.3-Pr7	HEA40	S355	1	14429	870.2
8.3-Pr10	HEA160	S355	2	1650	100.4
8.3-Pr12	KB04	S235	1	1660	15.2
8.3-Pr15	K120B	S235	1	1650	43.6
8.3-Pr16	HEB140	S355	1	3033	102.3
8.3-Pr17	HEB140	S355	1	3251	109.6
8.3-Pr18	HEA100	S355	2	3235	107.5
8.3-Pr19	HEB120	S355	1	3094	82.6
8.3-T1	HEB280	S355	1	14434	1487.7
Total per assembly				37047	

revision	date	drawn	check	description	status

Materials: U.N.D., Plates: 10+25mm: S235, profiles: S235 according to NEN-EN 10255-2. Hollow sections: hot rolled: D=100: S235, D=100: S235 according to NEN-EN 10219-1. Galvalut: D=100: S235, D=100: S235 according to NEN-EN 10219-1. Welds: as U.N.D. according to NEN-EN ISO 2553:2014. Both grade B & U.N.D.

drawn	ASK Melle	order	202001	drawing number	A [8.3-T1]
date		project			
revision		KTM Beveiligingsdoc			
size	A0	title			
scale	1:5 1:15	ASSEMBLY			Projection:

Fabrication and erection acc. to NEN-EN 1090-2:2008+A11:2011. Execution class: EXC2. Functional tolerance class: 1.